



# EXPEDITION II WOOD INSERT

**QUADRA-FIRE®**  
NOTHING BURNS LIKE A QUAD

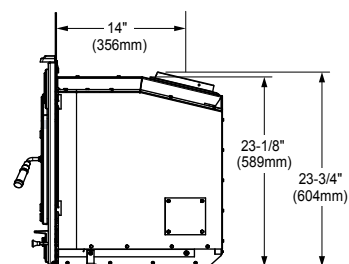
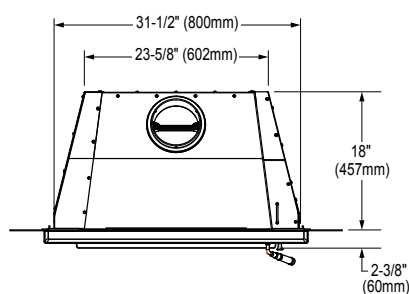
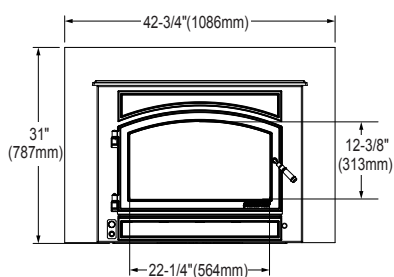




The Quadra-Fire Expedition II is the focal point to any area. A traditional fireplace, sleek in design.

Quadra-Fire's wood fireplace inserts can be installed into either an existing brickwork chimney, or into a new build using the optional zero clearance box.

| PEAK BTU/HR<br>OUTPUT | HEATING<br>CAPACITY           | MAX.<br>BURN TIME | EFFICIENCY             | EMISSIONS       | FIREBOX          | RECOMMENDED<br>LOG LENGTH | VARIABLE<br>SPEED | WEIGHT       |
|-----------------------|-------------------------------|-------------------|------------------------|-----------------|------------------|---------------------------|-------------------|--------------|
| <b>56,000</b>         | <b>Up to 240m<sup>2</sup></b> | <b>Up to 8h</b>   | <b>A 61%<br/>P 78%</b> | <b>1.4 g/hr</b> | <b>2.4 cu ft</b> | <b>520mm</b>              | <b>200 cfm</b>    | <b>185kg</b> |



Quadra Fires patented technologies gives you ease of operation, higher efficiency and longer burn times, all while using less fuel.

## FOUR- POINT BURN SYSTEM

**4X**

The patented Four-Point Burn System produces intense rolling flames. Four combustion cycles extend the heat, enhance the fire and increase efficiency for long-lasting, proven performance.

## AUTOMATIC COMBUSTION CONTROL

**ACC**

Automatic combustion control is an advanced heat management technology. ACC feeds the fire with air when its needed most - for prescient start-ups and consistent, extended burns.